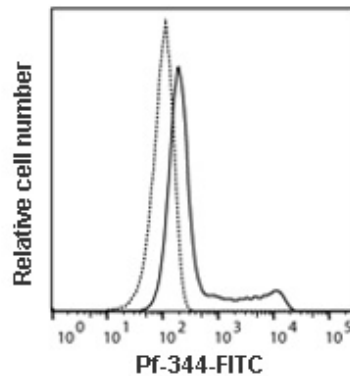


# Monoclonal Antibody to Human Perforin

FITC CONJUGATED

- Antibody:** Pf-344
- Product code:** 3465-7
- Size:** 100 tests
- Immunogen:** Native human Perforin
- Isotype:** Mouse IgG1
- Specificity:** Native human Perforin. Cross-reacts with native Perforin from rhesus and cynomolgus macaques. Please visit [www.mabtech.com](http://www.mabtech.com) for information on reactivity with monkey species. The antibody also cross-reacts with Perforin from pig.
- Contents:** Ready-to-use solution of conjugated antibody in sterile filtered (0.2µm) PBS with 0.2% BSA and 0.09% sodium azide.
- Purification:** Purified from *in vitro* cultures by protein G affinity chromatography.
- Conjugation:** The Pf-344 antibody has been conjugated to fluorescein isothiocyanate (FITC).
- Storage:** Store product at 4-8°C or frozen at -20°C or below. Avoid repeated freezing/thawing.
- Applications:** Detection of Perforin producing cells by flow cytometry. 5 µl is recommended for staining of 1 million cells in a total volume of 50 µl.



Detection of Perforin by flow cytometry in viable human peripheral blood mononuclear cells (PBMC). Human PBMC were fixed and permeabilized using 4% paraformaldehyde and saponin, and subsequently stained with Pf-344-FITC (solid line). Matched isotype control antibody (dashed line). The histogram derives from gated events of typical lymphocyte characteristics in forward and side light scatter. Flow cytometry was performed on a BD FACSVerse system.

# MABTECH

Note; for research use only.  
Mabtech shall not be liable for the use or handling of the product or for consequential, special, indirect or incidental damages there from.



Developed and manufactured by MABTECH AB, Sweden, whose quality management system complies with the standards ISO 9001:2015 & ISO 13485:2016.

Mabtech AB (Head Office)  
Sweden  
Tel: +46 8 716 27 00  
[mabtech@mabtech.com](mailto:mabtech@mabtech.com)

Mabtech, Inc.  
USA  
Tel: +1 513 871-4500  
[mabtech.usa@mabtech.com](mailto:mabtech.usa@mabtech.com)