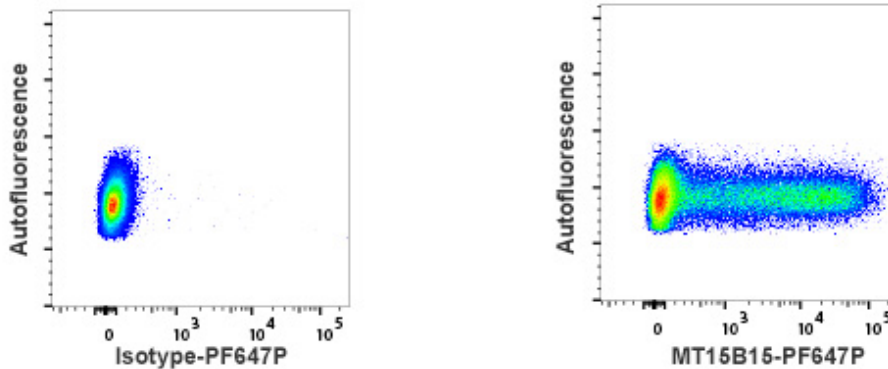


# Monoclonal Antibody to Monkey/Human TNF- $\alpha$

PF647P CONJUGATED

<b>Antibody:</b>	MT15B15
<b>Product code:</b>	3512M-72-100T
<b>Size:</b>	100 tests
<b>Immunogen:</b>	Recombinant human TNF- $\alpha$
<b>Isotype:</b>	Mouse IgG1
<b>Specificity:</b>	Native and recombinant human TNF- $\alpha$ . Cross-reacts with native TNF- $\alpha$ from rhesus and cynomolgus macaques. Please visit <a href="http://www.mabtech.com">www.mabtech.com</a> for information on reactivity with other monkey species.
<b>Contents:</b>	Ready-to-use solution of conjugated antibody in sterile filtered (0.2 $\mu$ m) PBS with 0.2% BSA and 0.09% sodium azide.
<b>Purification:</b>	Purified from <i>in vitro</i> cultures by protein G affinity chromatography.
<b>Conjugation:</b>	The MT15B15 antibody has been conjugated to PF647P.
<b>Storage:</b>	Store product at 4-8°C or frozen at -20°C or below. Avoid repeated freezing/thawing.
<b>Applications:</b>	Detection of human TNF- $\alpha$ producing cells by flow cytometry. 5 $\mu$ l is recommended for staining of 1 million cells in a total volume of 50 $\mu$ l.



Detection of TNF- $\alpha$  by flow cytometry in viable PBMC from Rhesus macaque. Cells were stimulated for 4 hours in the presence of PMA/ionomycin and Brefeldin A. Cells were fixed and permeabilized using 4% paraformaldehyde and saponin, and further stained with MT15B15-PF647P (right panel). Matched isotype control antibody (left panel). The dot plot derives from gated events of typical lymphocyte characteristics in forward and side light scatter. Flow cytometry was performed on a BD FACSVerser system.

# MABTECH

Note: for research use only.  
Mabtech shall not be liable for the use or handling of the product or for consequential, special, indirect or incidental damages there from.



Developed and manufactured by MABTECH AB, Sweden, whose quality management system complies with the standards ISO 9001:2015 & ISO 13485:2016.

Mabtech AB (Head Office)  
Sweden  
Tel: +46 8 716 27 00  
[mabtech@mabtech.com](mailto:mabtech@mabtech.com)

Mabtech, Inc.  
USA  
Tel: +1 513 871-4500  
[mabtech.usa@mabtech.com](mailto:mabtech.usa@mabtech.com)